



KEF UNI-Q® LOUDSPEAKERS



UNI-Q®



Ci 9000ACE

Information Sheet



The in-wall Ci Series 9000ACE from KEF is a innovative new advance into custom installed loudspeakers. The 165mm (6½") Uni-Q® driver array brings out the full emotional depth and texture of vocals, whether sung, shouted, spoken or whispered - hardly surprising, since it's exactly the same unit as you'll find on the XQ series. On either side, a matching pair of long throw bass drivers with ultra-low distortion motors for low frequency response that's as lucid as it is gutsy - and thanks to KEF's Acoustic Compliance

Enhancement technology, (ACE) what you actually hear is a level of bass extension that's normally only obtainable with much larger speakers.

Ci Series 9000ACE comes with two grille options: The pictured black cloth covered grille and a white overhanging grille. Also included is a plain grille frame, if a fabric or covering of personal choice is required.

The new Ci Series 9000ACE.
More range, more depth. More alive.

Features and Benefits:

Purpose built for flush mounting into walls, the 3-way, Ci9000ACE combines 150W power handling and 88dB sensitivity. A 165mm (6½") polypropylene cone midrange unit with a coincident mounted, twin neodymium magnet, 19mm (¾") aluminium dome, high-frequency unit and two 165mm (6½") bass drivers in a sealed back-box.

HF output can be increased through alternative terminal connection to compensate for grille coverings.

Ci series
custom installation speakers

KEF Audio (UK), Eccleston Road, Tovil, Maidstone, Kent, ME15 6QP U.K. Telephone: + 44 (0) 1622 672261. Fax: + 44 (0) 1622 750653

KEF America, 10 Timber Lane, Marlboro, New Jersey, 07746 USA. Telephone: + 1 732 683 2356. Fax: + 1 732 683 2358

GP Acoustics GmbH, Heinrichstraße 51, D-44536 Lünen, Deutschland. Telephone: +49 (0) 231 9860-320. Fax: +49 (0) 231 9860-330.

www.kef.com

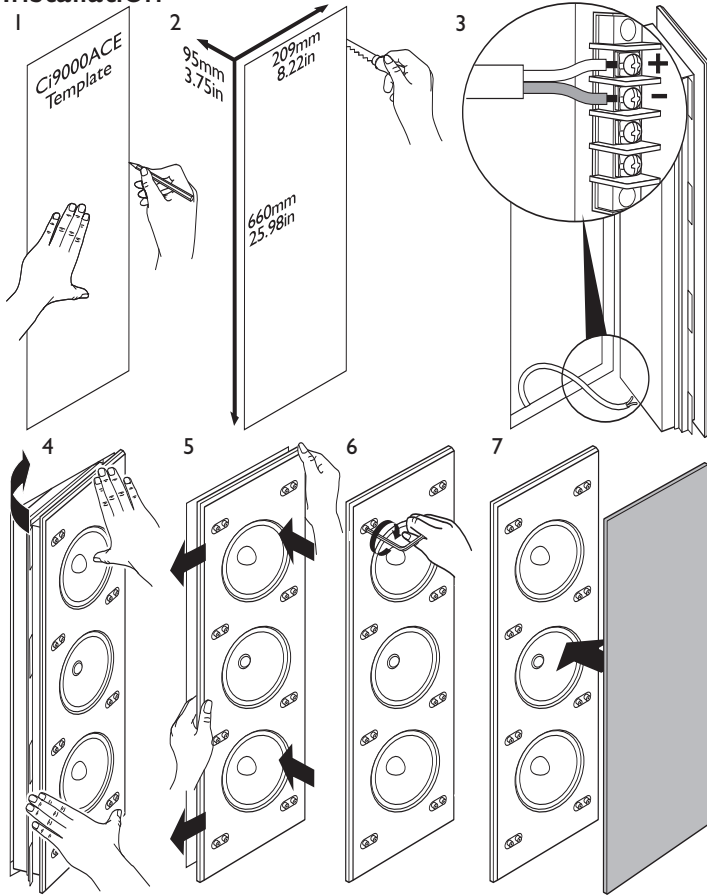
www.kefamerica.com

www.kefaudio.de

KEF®

Ci9000ACE

Installation



Architectural specifications:

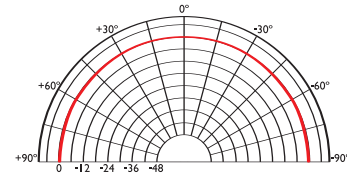
The Ci9000ACE comprises a Uni-Q® array with a coincident mounted, twin neodymium magnet, 19mm (3/4") aluminium dome, high-frequency unit, a 165mm polypropylene midrange unit and two 165mm bass drivers. Performance should meet or exceed the following criteria:

frequency response 1 metre on-axis with swept sinewave shall be 60Hz to 27kHz, sensitivity shall be at least 88dB for 2.83V@1m. The impedance and maximum power shall be 150W at 8 ohms. The Ci9000ACE is best suited for high quality music and home theatre applications where hi-fi performance is required, such as:

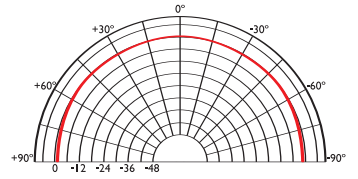
- Multi Room systems.
- Home Theatre systems.
- Lounges, Bars, Boutiques.
- Boardrooms & Offices.

Polar graphs

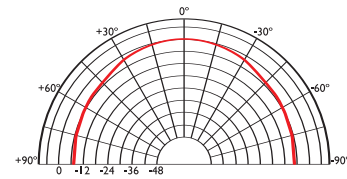
500Hz



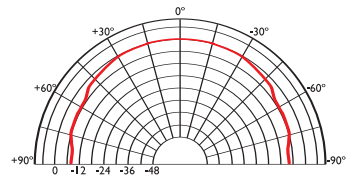
1kHz



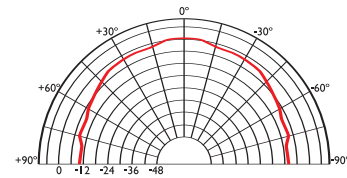
2kHz



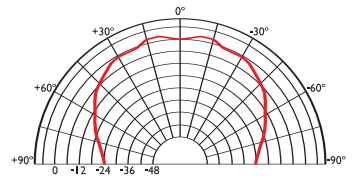
4kHz



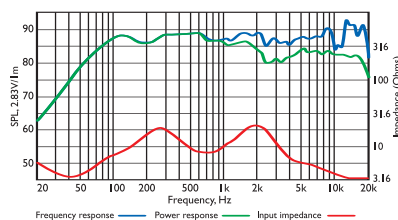
8kHz



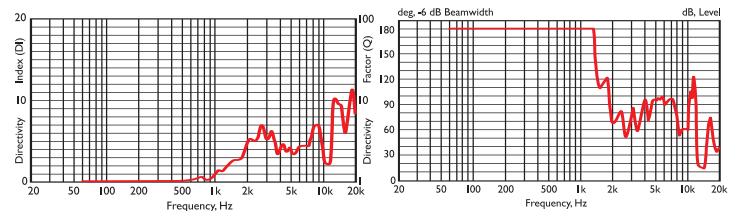
16kHz



Frequency / Power response, Input impedance



Directivity Index / Beamwidth



Specifications

Frequency range	60Hz - 27kHz
Sensitivity (2.83v @ 1m)	88dB
Rec. amplifier power	30 - 150W
Nominal Impedance	8Ω (min. 3.2Ω)
Crossover Frequency	350Hz, 3kHz

Enclosure material	Steel
Terminals	screw type
Dimensions (H x W x D)	680 x 230 x 106 mm, 26.75 x 9 x 4.2 in.
Net weight	12.5kg (27.5lbs)